

Susceptibility Report for System ID 1070167

System Details

Water System ID	1070167
System Name	EAST CEDAR CREEK FWSD BROOKSHIRE
Address	PO BOX 309 MABANK, TX 751470309
County	HENDERSON
Telephone	9038877103
PWS Type	C
Total Production	0

Ground Water Sources

Source ID	Drill Date	Top Screened Interval (Ft.)	Bottom Screened Interval (Ft.)	Pumpage Rate (GPM)	Entry Point	Operational Status
No groundwater sources						

Surface Water Sources

Source ID	Type	Surface Water Body	Entry Point	Operational Status
S1070167A	RS	CEDAR CREEK RESERVOIR	001	Operational

PWS System Susceptibility Summary: Contaminants with HIGH Susceptibility

The system is rated as having HIGH susceptibility to the contaminants listed below.

D.W. CONTAM. CANDIDATE LIST

Contaminant Name	Structural Integrity	Aquifer/Watershed Properties	Nonpoint Source	Point Source	Area Primary Influence	Contaminant Occurrence	Summary
LINURON	----	Moderate	Low	----	High	----	High
MOLINATE	----	Moderate	High	----	High	----	High
NITROBENZENE	----	Moderate	Low	----	High	----	High
ORGANOTINS	----	Moderate	Low	----	High	----	High
PERCHLORATE	----	Moderate	Low	----	High	----	High
EPTC	----	Moderate	Low	----	High	----	High
FONOFOS	----	Moderate	High	----	High	----	High
PROPAZINE	----	Moderate	High	----	High	----	High
RDX	----	Moderate	Low	----	High	----	High
TERBACIL	----	Moderate	Low	----	High	----	High
TERBUFOS	----	Moderate	Low	----	High	----	High
CYANAZINE	----	Moderate	Low	----	High	----	High
DCPA DI-ACID DEGRADATE	----	Moderate	Low	----	High	----	High
DCPA MONO-ACID DEGRADATE	----	Moderate	Low	----	High	----	High
DDE	----	Moderate	Low	----	High	----	High
DIAZINON	----	Moderate	Moderate	----	High	High	High
DISULFOTON	----	Moderate	Low	----	High	----	High
DIURON	----	Moderate	Low	----	High	----	High
1,2-DIPHENYLHYDRAZINE	----	Moderate	Low	----	High	----	High
1,3-DICHLOROPROPENE	----	Moderate	High	----	High	----	High
2,4,6-TRICHLOROPHENOL	----	Moderate	Low	----	High	----	High
2,4-DICHLOROPHENOL	----	Moderate	High	----	High	----	High
2,4-DINITROPHENOL	----	Moderate	High	----	High	----	High
2,4-DINITROTOLUENE	----	Moderate	Low	----	High	----	High
2,6-DINITROTOLUENE	----	Moderate	Low	----	High	----	High
2-METHYLPHENOL	----	Moderate	Low	----	High	----	High

ACETOCHLOR	----	Moderate	Low	----	High	----	High
BORON	----	Moderate	High	----	High	----	High

INORGANICS

Contaminant Name	Structural Integrity	Aquifer/Watershed Properties	Nonpoint Source	Point Source	Area Primary Influence	Contaminant Occurrence	Summary
IRON	----	Moderate	High	----	High	High	High
LEAD	----	Moderate	Moderate	----	High	High	High
MANGANESE	----	Moderate	High	----	High	High	High
MERCURY	----	Moderate	High	----	High	----	High
NICKEL	----	Moderate	Moderate	----	High	----	High
NITRATE	----	Moderate	Moderate	----	High	----	High
NITRATE + NITRITE	----	Moderate	Moderate	----	High	----	High
NITRITE	----	Moderate	High	----	High	----	High
FLUORIDE	----	Moderate	Moderate	----	High	----	High
HYDROGEN SULFIDE	----	Moderate	Low	----	High	----	High
SELENIUM	----	Moderate	Moderate	----	High	----	High
SILVER	----	Moderate	High	----	High	----	High
SULFATE	----	Moderate	Moderate	----	High	High	High
TDS	----	Moderate	Moderate	----	High	High	High
THALLIUM	----	Moderate	Low	----	High	----	High
ZINC	----	Moderate	Moderate	----	High	High	High
CHLORIDE	----	Moderate	Moderate	----	High	----	High
CHROMIUM	----	Moderate	Moderate	----	High	----	High
COPPER	----	Moderate	High	----	High	----	High
CYANIDE	----	Moderate	High	----	High	----	High
ALUMINUM	----	Moderate	Moderate	----	High	High	High
ANTIMONY	----	Moderate	High	----	High	----	High
ARSENIC	----	Moderate	High	----	High	High	High
ASBESTOS	----	Moderate	----	----	High	----	High
BARIUM	----	Moderate	Moderate	----	High	----	High
BERYLLIUM	----	Moderate	Moderate	----	High	----	High
BROMIDE	----	Moderate	Low	----	High	----	High
CADMIUM	----	Moderate	Moderate	----	High	High	High

INORGANICS MONITORED

Contaminant Name	Structural Integrity	Aquifer/Watershed Properties	Nonpoint Source	Point Source	Area Primary Influence	Contaminant Occurrence	Summary
MAGNESIUM	----	Moderate	Low	----	High	High	High
SPECIFIC CONDUCTANCE	----	Moderate	Low	----	High	----	High
CARBONATE	----	Moderate	Low	----	High	----	High
ALKALINITY	----	Moderate	Low	----	High	----	High
BICARBONATE	----	Moderate	Low	----	High	----	High

INORGANICS UNREGULATED

Contaminant Name	Structural Integrity	Aquifer/Watershed Properties	Nonpoint Source	Point Source	Area Primary Influence	Contaminant Occurrence	Summary
SODIUM	----	Moderate	High	----	High	High	High
CALCIUM	----	Moderate	Moderate	----	High	High	High

PHYSICAL

Contaminant Name	Structural Integrity	Aquifer/Watershed Properties	Nonpoint Source	Point Source	Area Primary Influence	Contaminant Occurrence	Summary
HARDNESS	----	Moderate	Moderate	----	High	----	High

PHYSICAL PARAMETER

Contaminant Name	Structural Integrity	Aquifer/Watershed Properties	Nonpoint Source	Point Source	Area Primary Influence	Contaminant Occurrence	Summary
pH	----	Moderate	High	----	High	----	High

RADIOCHEM

Contaminant Name	Structural Integrity	Aquifer/Watershed Properties	Nonpoint Source	Point Source	Area Primary Influence	Contaminant Occurrence	Summary
GROSS ALPHA	----	Moderate	Low	----	High	----	High
GROSS BETA	----	Moderate	Low	----	High	----	High
RADIUM-226	----	Moderate	Low	----	High	----	High
RADIUM-228	----	Moderate	Low	----	High	----	High
STRONTIUM-90	----	Moderate	Low	----	High	----	High
TRITIUM	----	Moderate	Low	----	High	----	High

RADIOCHEM UNREGULATED

Contaminant Name	Structural Integrity	Aquifer/Watershed Properties	Nonpoint Source	Point Source	Area Primary Influence	Contaminant Occurrence	Summary
RADON	----	Moderate	Low	----	High	----	High
STRONTIUM-89	----	Moderate	Low	----	High	----	High
URANIUM	----	Moderate	Moderate	----	High	----	High

SOC MONITORED

Contaminant Name	Structural Integrity	Aquifer/Watershed Properties	Nonpoint Source	Point Source	Area Primary Influence	Contaminant Occurrence	Summary
LAMBAST	----	Moderate	High	----	High	----	High
METHIOCARB	----	Moderate	High	----	High	----	High
METHOMYL	----	Moderate	Low	----	High	----	High
METOLACHLOR	----	Moderate	High	----	High	High	High
METRIBUZIN	----	Moderate	Low	----	High	----	High
PHENANTHRENE	----	Moderate	Low	----	High	----	High
FLUORENE	----	Moderate	Low	----	High	----	High
INDENO[1,2,3,CD]PYRENE	----	Moderate	----	----	High	----	High
PROMETON	----	Moderate	High	----	High	----	High
PROPACHLOR	----	Moderate	High	----	High	----	High
PYRENE	----	Moderate	Low	----	High	----	High
TRIFLURALIN	----	Moderate	Low	----	High	----	High
CHRYSENE	----	Moderate	High	----	High	----	High
DIBENZ[A,H]ANTHRACENE	----	Moderate	Low	----	High	----	High
DICAMBA	----	Moderate	Moderate	----	High	----	High
DIELDRIN	----	Moderate	Low	----	High	----	High
DIETHYL PHTHALATE	----	Moderate	High	----	High	----	High
DIMETHYL PHTHALATE	----	Moderate	High	----	High	----	High
DI-N-BUTYL PHTHALATE	----	Moderate	Low	----	High	----	High
2,4,5-T	----	Moderate	Moderate	----	High	----	High
3-HYDROXYCARBOFURAN	----	Moderate	High	----	High	----	High
ACENAPHTHENE	----	Moderate	High	----	High	----	High
ACENAPHTHYLENE	----	Moderate	Low	----	High	----	High
ALDRIN	----	Moderate	Low	----	High	----	High
ANTHRACENE	----	Moderate	High	----	High	----	High
BENTAZON	----	Moderate	Low	----	High	----	High
BENZO[A]ANTHRACENE	----	Moderate	Low	----	High	----	High
BENZO[B]FLUORANTHENE	----	Moderate	Low	----	High	----	High
BENZO[G,H,I]PERYLENE	----	Moderate	Low	----	High	----	High
BENZO[K]FLUORANTHENE	----	Moderate	----	----	High	----	High
BROMACIL	----	Moderate	High	----	High	----	High
BUTACHLOR	----	Moderate	High	----	High	----	High
BUTYL BENZYL PHTHALATE	----	Moderate	Low	----	High	----	High
CARBARYL	----	Moderate	Low	----	High	----	High

SOC REGULATED

Contaminant Name	Structural Integrity	Aquifer/Watershed Properties	Nonpoint Source	Point Source	Area Primary Influence	Contaminant Occurrence	Summary
LINDANE	----	Moderate	Low	----	High	----	High
METHOXYCHLOR	----	Moderate	High	----	High	----	High
OXAMYL	----	Moderate	Low	----	High	----	High
PCBs	----	Moderate	Low	----	High	----	High
PENTACHLOROPHENOL	----	Moderate	High	----	High	----	High
PICLORAM	----	Moderate	Moderate	----	High	----	High
ETHYLENE DIBROMIDE	----	Moderate	----	----	High	----	High
GLYPHOSATE	----	Moderate	High	----	High	----	High
HEPTACHLOR	----	Moderate	Low	----	High	----	High
HEPTACHLOR EPOXIDE	----	Moderate	Low	----	High	----	High
HEXACHLOROBENZENE	----	Moderate	High	----	High	----	High
HEXACHLOROCYCLOPENTADIENE	----	Moderate	High	----	High	----	High
SIMAZINE	----	Moderate	High	----	High	High	High
TOXAPHENE	----	Moderate	High	----	High	----	High
CHLORDANE	----	Moderate	Low	----	High	----	High
CHLORDANE (ALPHA-CHLORDANE)	----	Moderate	Low	----	High	----	High
CHLORDANE (GAMMA-CHLORDANE)	----	Moderate	Low	----	High	----	High
CHLORDANE (TRANS-NONACHLOR)	----	Moderate	Low	----	High	----	High
DALAPON	----	Moderate	High	----	High	----	High
DI-(2-ETHYLHEXYL)ADIPATE	----	Moderate	High	----	High	----	High
DI-(2-ETHYLHEXYL)PHTHALATE	----	Moderate	High	----	High	----	High
DIBROMOCHLOROPROPANE	----	Moderate	High	----	High	----	High
DINOSEB	----	Moderate	High	----	High	----	High
DIQUAT	----	Moderate	Low	----	High	----	High
ENDOTHALL	----	Moderate	High	----	High	----	High
ENDRIN	----	Moderate	High	----	High	----	High
2,3,7,8-TCDD	----	Moderate	----	----	High	----	High
2,4,5-TP	----	Moderate	Low	----	High	----	High
2,4-D	----	Moderate	Moderate	----	High	----	High
ALACHLOR	----	Moderate	Low	----	High	----	High
ALDICARB	----	Moderate	Low	----	High	----	High
ALDICARB SULFONE	----	Moderate	High	----	High	----	High
ALDICARB SULFOXIDE	----	Moderate	High	----	High	----	High
ATRAZINE	----	Moderate	Moderate	----	High	High	High
BENZO(A)PYRENE	----	Moderate	High	----	High	----	High
CARBOFURAN	----	Moderate	Low	----	High	----	High

THM

Contaminant Name	Structural Integrity	Aquifer/Watershed Properties	Nonpoint Source	Point Source	Area Primary Influence	Contaminant Occurrence	Summary
CHLOROFORM	----	Moderate	High	----	High	----	High
DIBROMOCHLOROMETHANE	----	Moderate	----	----	High	----	High
BROMOCHLOROMETHANE	----	Moderate	----	----	High	----	High
BROMODICHLOROMETHANE	----	Moderate	----	----	High	----	High
BROMOFORM	----	Moderate	Low	----	High	----	High
BROMOMETHANE	----	Moderate	High	----	High	----	High

VOC - OTHER COMPOUNDS

Contaminant Name	Structural Integrity	Aquifer/Watershed Properties	Nonpoint Source	Point Source	Area Primary Influence	Contaminant Occurrence	Summary
METHYL IODIDE (Iodomethane)	----	Moderate	High	----	High	----	High
METHYL ETHYL KETONE	----	Moderate	Low	----	High	----	High
METHYL METHACRYLATE	----	Moderate	Low	----	High	----	High

METHYL-T-BUTYL ETHER	----	Moderate	High	----	High	----	High
ETHYL METHACRYLATE	----	Moderate	Low	----	High	----	High
TETRAHYDROFURAN	----	Moderate	Low	----	High	----	High
VINYL ACETATE	----	Moderate	Low	----	High	----	High
2-HEXANONE	----	Moderate	Low	----	High	----	High
4-METHYL-2-PENTANONE (MIBK)	----	Moderate	Low	----	High	----	High
ACETONE	----	Moderate	Low	----	High	----	High
ACRYLONITRILE	----	Moderate	Low	----	High	----	High
CARBON DISULFIDE	----	Moderate	High	----	High	----	High

VOC MONITORED

Contaminant Name	Structural Integrity	Aquifer/Watershed Properties	Nonpoint Source	Point Source	Area Primary Influence	Contaminant Occurrence	Summary
ISOPROPYLBENZENE	----	Moderate	Low	----	High	----	High
M + P XYLENE	----	Moderate	Low	----	High	----	High
NAPHTHALENE	----	Moderate	Low	----	High	----	High
N-BUTYLBENZENE	----	Moderate	Low	----	High	----	High
N-PROPYLBENZENE	----	Moderate	Low	----	High	----	High
HEXACHLOROBUTADIENE	----	Moderate	Low	----	High	----	High
S-BUTYLBENZENE	----	Moderate	Low	----	High	----	High
T-BUTYLBENZENE	----	Moderate	Low	----	High	----	High
TRANS-1,3-DICHLOROPROPENE	----	Moderate	High	----	High	----	High
TRICHLOROFLUOROMETHANE	----	Moderate	High	----	High	----	High
CHLOROETHANE	----	Moderate	High	----	High	----	High
CHLOROMETHANE	----	Moderate	Low	----	High	----	High
CIS-1,3-DICHLOROPROPENE	----	Moderate	High	----	High	----	High
DIBROMOMETHANE	----	Moderate	Low	----	High	----	High
DICHLORODIFLUOROMETHANE	----	Moderate	High	----	High	----	High
1,2,4-TRIMETHYLBENZENE	----	Moderate	Low	----	High	----	High
1,3,5-TRIMETHYLBENZENE	----	Moderate	Low	----	High	----	High
1,3-DICHLOROBENZENE	----	Moderate	High	----	High	----	High
1,3-DICHLOROPROPANE	----	Moderate	High	----	High	----	High
2,2-DICHLOROPROPANE	----	Moderate	----	----	High	----	High
2-CHLOROTOLUENE	----	Moderate	High	----	High	----	High
4-CHLOROTOLUENE	----	Moderate	Low	----	High	----	High
4-ISOPROPYLTOLUENE	----	Moderate	Low	----	High	----	High
BROMOBENZENE	----	Moderate	----	----	High	----	High
1,1,1,2-TETRACHLOROETHANE	----	Moderate	Low	----	High	----	High
1,1,2,2-TETRACHLOROETHANE	----	Moderate	High	----	High	----	High
1,1-DICHLOROETHANE	----	Moderate	Low	----	High	----	High
1,1-DICHLOROPROPENE	----	Moderate	Low	----	High	----	High
1,2,3-TRICHLOROBENZENE	----	Moderate	Low	----	High	----	High
1,2,3-TRICHLOROPROPANE	----	Moderate	Low	----	High	----	High

VOC REGULATED

Contaminant Name	Structural Integrity	Aquifer/Watershed Properties	Nonpoint Source	Point Source	Area Primary Influence	Contaminant Occurrence	Summary
MONOCHLOROBENZENE (CHLOROBENZENE)	----	Moderate	Low	----	High	----	High
M-XYLENE	----	Moderate	Low	----	High	----	High
ORTHO-1,2-DICHLOROBENZENE	----	Moderate	High	----	High	----	High
O-XYLENE	----	Moderate	Low	----	High	----	High
PARA-1,4-DICHLOROBENZENE	----	Moderate	High	----	High	----	High
ETHYLBENZENE	----	Moderate	High	----	High	----	High
P-XYLENE	----	Moderate	Low	----	High	----	High
STYRENE	----	Moderate	Low	----	High	----	High
TETRACHLOROETHYLENE	----	Moderate	High	----	High	----	High
TOLUENE	----	Moderate	Moderate	----	High	----	High

TRANS-1,2-DICHLOROETHYLENE	----	Moderate	High	----	High	----	High
TRICHLOROETHYLENE	----	Moderate	High	----	High	----	High
VINYL CHLORIDE	----	Moderate	High	----	High	----	High
XYLENES (TOTAL)	----	Moderate	Low	----	High	----	High
CHLOROBENZENE (MONOCHLOROBENZENE)	----	Moderate	High	----	High	----	High
CIS-1,2-DICHLOROETHYLENE	----	Moderate	High	----	High	----	High
DICHLOROMETHANE	----	Moderate	High	----	High	----	High
1,2,4-TRICHLOROBENZENE	----	Moderate	High	----	High	----	High
1,2-DICHLOROETHANE	----	Moderate	High	----	High	----	High
1,2-DICHLOROPROPANE	----	Moderate	High	----	High	----	High
BENZENE	----	Moderate	Low	----	High	----	High
CARBON TETRACHLORIDE	----	Moderate	High	----	High	----	High
1,1,1-TRICHLOROETHANE	----	Moderate	High	----	High	----	High
1,1,2-TRICHLOROETHANE	----	Moderate	High	----	High	----	High
1,1-DICHLOROETHYLENE	----	Moderate	High	----	High	----	High

Other

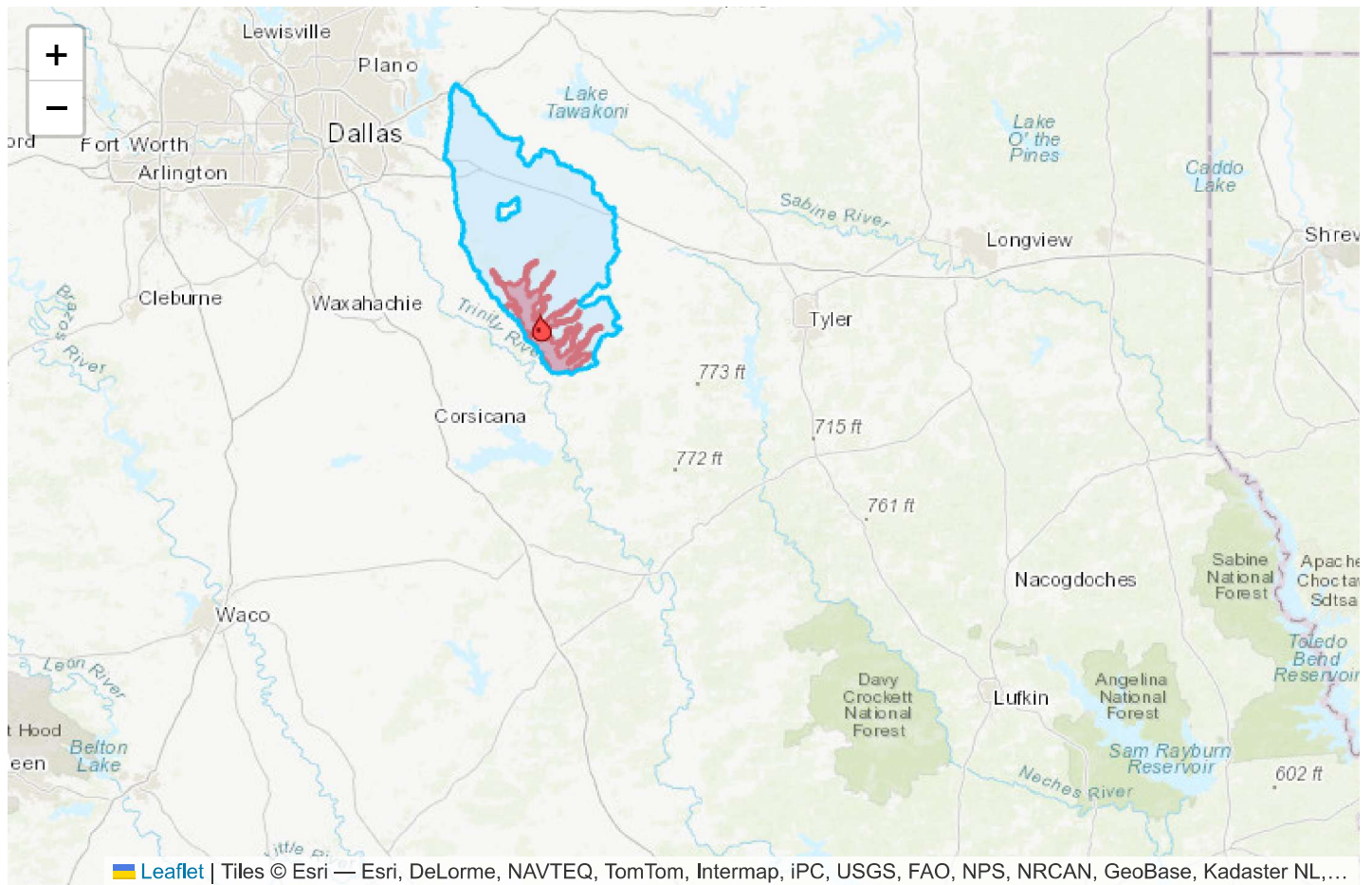
Contaminant Name	Structural Integrity	Aquifer/Watershed Properties	Nonpoint Source	Point Source	Area Primary Influence	Contaminant Occurrence	Summary
P-ALKALINITY	----	Moderate	----	----	High	----	High
ESCHERICHIA COLI	----	Moderate	Moderate	----	High	----	High
FECAL VIRUSES	----	Moderate	Moderate	----	High	----	High
GIARDIA LAMBLIA	----	Moderate	Moderate	----	High	----	High
TOTAL ALPHA EMITTING RADIUM	----	Moderate	Low	----	High	----	High
TOTAL COLIFORM	----	Moderate	Moderate	----	High	----	High
TOTAL TRIHALOMETHANE	----	Moderate	----	----	High	----	High
TRIAZINES	----	Moderate	High	----	High	----	High
CRYPTOSPORIDIUM PARVUM	----	Moderate	Moderate	----	High	----	High
AROCLOR (PCB)	----	Moderate	High	----	High	----	High

PWS System Susceptibility Summary: Contaminants with MODERATE Susceptibility

The system is rated as having MODERATE susceptibility to the contaminants listed below.

No contaminants with moderate susceptibility.

Source Details: S1070167A



Contaminants with HIGH Susceptibility

No contaminants with high susceptibility.

Contaminants with MODERATE Susceptibility

No contaminants with moderate susceptibility.

Contaminant List

List of regulated and unregulated assessed contaminants grouped by contaminant class. TCEQ Chapter 290 Subchapter F rules are cited for each drinking water standard (secondary drinking water standards are italicized). The TCEQ threshold limit is the concentration used within the contaminant occurrence component to determine if a detection of the chemical was found during water quality monitoring activities. The chemical abstract service (CAS) number is a unique identifier for each chemical.

D.W. CONTAM. CANDIDATE LIST

Contaminant Name	Drinking Water Standard	PWS Rule	TCEQ Threshold	CAS Number
CYANAZINE			0.01 ug/L	21725-46-2
DCPA DI-ACID DEGRADATE			0.00 ug/L	2136-79-0
BORON	2.20 mg/L		10.00 ug/L	11113-50-1
2,4,6-TRICHLOROPHENOL	0.08 mg/L		20.00 ug/L	88-06-2
2,4-DICHLOROPHENOL	0.07 mg/L		20.00 ug/L	120-83-2
2,4-DINITROPHENOL	0.05 mg/L		20.00 ug/L	51-28-5
2,4-DINITROTOLUENE	0.00 mg/L		5.00 ug/L	121-14-2
2,6-DINITROTOLUENE	0.00 mg/L		5.00 ug/L	606-20-2
2-METHYLPHENOL	0.05 mg/L		5.00 ug/L	95-48-7
ACETOCHLOR			0.01 ug/L	34256-82-1
1,2-DIPHENYLHYDRAZINE	0.00 mg/L		0.10 ug/L	122-66-7
1,3-DICHLOROPROPENE	0.01 mg/L		0.10 ug/L	542-75-6
PROPAZINE			0.01 ug/L	139-40-2
RDX	0.01 mg/L		0.10 ug/L	121-82-4
TERBACIL			0.01 ug/L	5902-51-2
TERBUFOS			0.01 ug/L	13071-79-9
DCPA MONO-ACID DEGRADATE			0.00 ug/L	887-54-7
DDE	0.00 mg/L		0.01 ug/L	72-55-9
DIAZINON	0.02 mg/L		0.01 ug/L	333-41-5
DISULFOTON	0.00 mg/L		0.01 ug/L	298-04-4
DIURON	0.05 mg/L		0.05 ug/L	330-54-1
EPTC	0.61 mg/L		0.01 ug/L	759-94-4
FONOFOS			0.01 ug/L	944-22-9
LINURON			0.01 ug/L	330-55-2
MOLINATE	0.05 mg/L		0.01 ug/L	2212-67-1
NITROBENZENE	0.01 mg/L		0.10 ug/L	98-95-3
ORGANOTINS				
PERCHLORATE				14797-73-0

INORGANICS

Contaminant Name	Drinking Water Standard	PWS Rule	TCEQ Threshold	CAS Number
CHLORIDE		§290.113	125.00 mg/L	16887-00-6
CHROMIUM	0.10 mg/L	§290.103(1)	50.00 ug/L	11104-59-9
COPPER	1.30 mg/L	§290.120	65.00 ug/L	17493-86-6
CYANIDE	0.20 mg/L	§290.103(1)	0.01 mg/L	57-12-5
BERYLLIUM	0.00 mg/L	§290.103(1)	2.00 ug/L	14701-08-7
BROMIDE				
CADMIUM	0.01 mg/L	§290.103(1)	2.50 ug/L	22537-48-0
ALUMINUM	24.44 mg/L	§290.113	0.10 ug/L	14903-36-7
ANTIMONY	0.01 mg/L	§290.103(1)	3.00 ug/L	64924-52-3
ARSENIC	0.05 mg/L	§290.103(1)	10.00 ug/L	15584-04-0
ASBESTOS	7.00 mg/L		-9,999.00 ug/L	1332-21-4
BARIUM	2.00 mg/L	§290.103(1)	1,000.00 ug/L	16541-35-8
SELENIUM	0.05 mg/L	§290.103(1)	25.00 ug/L	7782-49-2
SILVER	0.12 mg/L	§290.113	25.00 ug/L	14701-21-4
SULFATE	500.00 mg/L	§290.113	125.00 mg/L	14808-79-8
TDS		§290.113	250.00 mg/L	
THALLIUM	0.00 mg/L	§290.103(1)	1.00 ug/L	7440-28-0
ZINC	7.33 mg/L	§290.113	2.50 ug/L	15176-26-8
FLUORIDE	4.00 mg/L	§290.103(1)	2.00 mg/L	16984-48-8
HYDROGEN SULFIDE		§290.113	0.00 mg/L	15035-72-0

IRON		\$290.113	150.00 ug/L	15438-31-0
LEAD	0.02 mg/L	\$290.120	0.00 ug/L	14701-27-0
MANGANESE	1.15 mg/L	\$290.113	25.00 ug/L	14333-14-3
MERCURY	0.00 mg/L	\$290.103(1)	1.00 ug/L	14302-87-5
NICKEL	0.49 mg/L	\$290.103(1)	50.00 ug/L	14701-22-5
NITRATE	10.00 mg/L	\$290.103(1)	3.00 mg/L	14797-55-8
NITRATE+NITRITE	10.00 mg/L	\$290.103(1)	3.00 mg/L	none
NITRITE	1.00 mg/L	\$290.103(1)	0.50 mg/L	14797-65-0

INORGANICS MONITORED

Contaminant Name	Drinking Water Standard	PWS Rule	TCEQ Threshold	CAS Number
CARBONATE			1.00 mg/L	3812-32-6
BICARBONATE			1.00 mg/L	71-52-3
ALKALINITY			1.00 mg/L	
SPECIFIC CONDUCTANCE			1.00 uS/cm	
MAGNESIUM			0.01 mg/L	14581-92-1

INORGANICS UNREGULATED

Contaminant Name	Drinking Water Standard	PWS Rule	TCEQ Threshold	CAS Number
CALCIUM			0.02 mg/L	14102-48-8
SODIUM			0.20 mg/L	17341-25-2

PHYSICAL

Contaminant Name	Drinking Water Standard	PWS Rule	TCEQ Threshold	CAS Number
HARDNESS			1.00 mg/L	

PHYSICAL PARAMETER

Contaminant Name	Drinking Water Standard	PWS Rule	TCEQ Threshold	CAS Number
pH		\$290.113	0.10 pH	

RADIOCHEM

Contaminant Name	Drinking Water Standard	PWS Rule	TCEQ Threshold	CAS Number
RADIUM-226	5.00 mg/L	\$290.110	1.00 pCi/L	13982-63-3
RADIUM-228	5.00 mg/L	\$290.110	0.50 pCi/L	15262-20-1
STRONTIUM-90		\$290.110	0.50 pCi/L	10098-97-2
TRITIUM		\$290.110	1.00 pCi/L	15086-10-9
GROSS ALPHA	15.00 mg/L	\$290.110	3.00 pCi/L	
GROSS BETA	4.00 mg/L	\$290.110	3.00 pCi/L	

RADIOCHEM UNREGULATED

Contaminant Name	Drinking Water Standard	PWS Rule	TCEQ Threshold	CAS Number
RADON	300.00 mg/L		0.50 pCi/L	10043-92-2
STRONTIUM-89			0.50 pCi/L	14701-18-9
URANIUM	0.02 mg/L		1.00 ug/L	none

SOC MONITORED

Contaminant Name	Drinking Water Standard	PWS Rule	TCEQ Threshold	CAS Number
CHRYSENE	0.13 mg/L		0.10 ug/L	218-01-9
BENZO[B]FLUORANTHENE	0.00 mg/L		10.00 ug/L	205-99-2
BENZO[G,H,I]PERYLENE	0.73 mg/L		10.00 ug/L	191-24-2
BENZO[K]FLUORANTHENE	0.01 ug/L		10.00 ug/L	207-08-9
BROMACIL			0.05 ug/L	314-40-9
BUTACHLOR			0.05 ug/L	23184-66-9
BUTYL BENZYL PHTHALATE	4.89 mg/L		5.00 ug/L	85-68-7

CARBARYL	2.44 mg/L	0.01 ug/L	63-25-2
2,4,5-T	0.24 mg/L	0.05 ug/L	93-76-5
3-HYDROXYCARBOFURAN		0.05 ug/L	16655-82-6
ACENAPHTHENE	1.47 mg/L	5.00 ug/L	83-32-9
ACENAPHTHYLENE	1.47 mg/L	5.00 ug/L	208-96-8
ALDRIN	0.00 mg/L	0.10 ug/L	309-00-2
ANTHRACENE	7.33 mg/L	5.00 ug/L	120-12-7
BENTAZON		0.05 ug/L	25057-89-0
BENZO[A]ANTHRACENE	0.00 mg/L	10.00 ug/L	56-55-3
PHENANTHRENE		5.00 ug/L	85-01-8
PROMETON		0.01 ug/L	1610-18-0
PROPACHLOR		0.01 ug/L	1918-16-7
PYRENE	0.73 mg/L	0.10 ug/L	129-00-0
TRIFLURALIN	0.12 mg/L	0.01 ug/L	1582-09-8
DIBENZ[A,H]ANTHRACENE	0.00 mg/L	10.00 ug/L	53-70-3
DICAMBA	0.73 mg/L	0.05 ug/L	1918-00-9
DIELDRIN	0.00 mg/L	0.01 ug/L	60-57-1
DIETHYL PHTHALATE	19.55 mg/L	5.00 ug/L	84-66-2
DIMETHYL PHTHALATE	19.55 mg/L	5.00 ug/L	131-11-3
DI-N-BUTYL PHTHALATE	2.44 mg/L	5.00 ug/L	84-74-2
FLUORENE	0.98 mg/L	0.10 ug/L	86-73-7
INDENO[1,2,3,CD]PYRENE		10.00 ug/L	193-39-5
LAMBAST		0.05 ug/L	845-52-3
METHIOCARB		0.05 ug/L	2032-65-7
METHOMYL	0.61 mg/L	0.05 ug/L	16752-77-5
METOLACHLOR	3.67 mg/L	0.01 ug/L	51218-45-2
METRIBUZIN		0.01 ug/L	21087-64-9

SOC REGULATED

Contaminant Name	Drinking Water Standard	PWS Rule	TCEQ Threshold	CAS Number
CHLORDANE	0.00 mg/L	§290.103(3)(A)	0.10 ug/L	57-74-9
CHLORDANE (ALPHA-CHLORDANE)	0.00 mg/L	§290.103(3)(A)	0.10 ug/L	5103-71-9
CHLORDANE (GAMMA-CHLORDANE)	0.00 mg/L	§290.103(3)(A)	0.10 ug/L	12789-03-6
CHLORDANE (TRANS-NONACHLOR)	0.00 mg/L	§290.103(3)(A)	0.10 ug/L	39765-80-5
DALAPON	0.20 mg/L	§290.103(3)(A)	0.05 mg/L	75-99-0
CARBOFURAN	0.04 mg/L	§290.103(3)(A)	0.01 ug/L	1563-66-2
2,3,7,8-TCDD	0.00 mg/L	§290.103(3)(A)	0.10 mg/L	1746-01-6
2,4,5-TP	0.05 mg/L	§290.103(3)(A)	0.05 ug/L	93-72-1
2,4-D	0.07 mg/L	§290.103(3)(A)	0.15 ug/L	94-75-7
ALACHLOR	0.00 mg/L	§290.103(3)(A)	0.01 ug/L	15972-60-8
ALDICARB	0.01 mg/L	§290.103(3)(A)	0.55 ug/L	116-06-3
ALDICARB SULFONE	0.01 mg/L	§290.103(3)(A)	0.10 ug/L	1646-88-4
ALDICARB SULFOXIDE	0.01 mg/L	§290.103(3)(A)	0.05 ug/L	1646-87-3
ATRAZINE	0.00 mg/L	§290.103(3)(A)	0.01 ug/L	1912-24-9
BENZO(A)PYRENE	0.00 mg/L	§290.103(3)(A)	10.00 ug/L	50-32-8
PICLORAM	0.50 mg/L	§290.103(3)(A)	0.05 ug/L	1918-02-1
SIMAZINE	0.00 mg/L		0.01 ug/L	122-34-9
TOXAPHENE	0.00 mg/L	§290.103(3)(A)	2.00 ug/L	8001-35-2
DI-(2-ETHYLHEXYL)ADIPATE	0.40 mg/L	§290.103(3)(A)	5.00 ug/L	103-23-1
DI-(2-ETHYLHEXYL)PHTHALATE	0.01 mg/L	§290.103(3)(A)	5.00 ug/L	117-81-7
DIBROMOCHLOROPROPANE	0.00 mg/L	§290.103(3)(A)	0.10 ug/L	67708-83-2
DINOSEB	0.01 mg/L	§290.103(3)(A)	0.05 ug/L	88-85-7
DIQUAT	0.02 mg/L	§290.103(3)(A)	0.05 mg/L	2764-72-9
ENDOTHALL	0.10 mg/L	§290.103(3)(A)	0.05 ug/L	145-73-3
ENDRIN	0.00 mg/L	§290.103(3)(A)	0.05 ug/L	72-20-8
ETHYLENE DIBROMIDE	0.00 mg/L	§290.103(3)(A)	0.10 ug/L	106-93-4
GLYPHOSATE	0.70 mg/L	§290.103(3)(A)	0.05 ug/L	1071-83-6
HEPTACHLOR	0.00 mg/L	§290.103(3)(A)	0.10 ug/L	76-44-8
HEPTACHLOR EPOXIDE	0.00 mg/L	§290.103(3)(A)	0.10 ug/L	1024-57-3
HEXACHLOROBENZENE	0.00 mg/L	§290.103(3)(A)	5.00 ug/L	118-74-1
HEXACHLOROCYCLOPENTADIENE	0.05 mg/L	§290.103(3)(A)	5.00 ug/L	77-47-4

LINDANE	0.00 mg/L	\$290.103(3)(A)	0.01 ug/L	58-89-9
METHOXYCHLOR	0.04 mg/L	\$290.103(3)(A)	0.05 ug/L	72-43-5
OXAMYL	0.20 mg/L	\$290.103(3)(A)	0.05 ug/L	23135-22-0
PCBs	0.00 mg/L	\$290.103(3)(A)	0.10 ug/L	53469-21-9
PENTACHLOROPHENOL	0.00 mg/L	\$290.103(3)(A)	30.00 ug/L	87-86-5

THM

Contaminant Name	Drinking Water Standard	PWS Rule	TCEQ Threshold	CAS Number
CHLOROFORM	0.10 mg/L	\$290.116	0.10 ug/L	67-66-3
BROMOCHLOROMETHANE	0.98 mg/L		0.10 ug/L	74-97-5
BROMODICHLOROMETHANE	0.10 mg/L	\$290.116	0.10 ug/L	75-27-4
BROMOFORM	0.10 mg/L	\$290.116	0.10 ug/L	75-25-2
BROMOMETHANE	0.03 mg/L		0.10 ug/L	74-83-9
DIBROMOCHLOROMETHANE	0.10 mg/L	\$290.116	0.10 ug/L	124-48-1

VOC - OTHER COMPOUNDS

Contaminant Name	Drinking Water Standard	PWS Rule	TCEQ Threshold	CAS Number
CARBON DISULFIDE	2.44 mg/L		0.10 ug/L	75-15-0
2-HEXANONE	1.47 mg/L		0.10 ug/L	591-78-6
4-METHYL-2-PENTANONE (MIBK)	1.96 mg/L		0.10 ug/L	108-10-1
ACETONE	2.44 mg/L		0.10 ug/L	67-64-1
ACRYLONITRILE	0.00 mg/L		0.10 ug/L	107-13-1
TETRAHYDROFURAN	0.12 mg/L		0.10 ug/L	109-99-9
VINYL ACETATE	24.44 mg/L		0.10 ug/L	108-05-4
ETHYL METHACRYLATE	2.20 mg/L		0.10 ug/L	97-63-2
METHYL IODIDE (IODOMETHANE)	0.03 mg/L		0.10 ug/L	74-88-4
METHYL ETHYL KETONE	14.67 mg/L		0.10 ug/L	78-93-3
METHYL METHACRYLATE	34.22 mg/L		0.10 ug/L	80-62-6
METHYL-T-BUTYL ETHER	0.24 mg/L		0.10 ug/L	1634-04-4

VOC MONITORED

Contaminant Name	Drinking Water Standard	PWS Rule	TCEQ Threshold	CAS Number
CHLOROETHANE	9.78 mg/L		0.10 ug/L	75-00-3
CHLOROMETHANE	0.07 mg/L		0.10 ug/L	74-87-3
CIS-1,3-DICHLOROPROPENE	0.00 mg/L		0.10 ug/L	10061-01-5
BROMOBENZENE	0.49 mg/L		0.10 ug/L	108-86-1
2-CHLOROTOLUENE	0.49 mg/L		0.10 ug/L	95-49-8
4-CHLOROTOLUENE	0.49 mg/L		0.10 ug/L	106-43-4
4-ISOPROPYLTOLUENE	2.44 mg/L		0.10 ug/L	99-87-6
1,1,1,2-TETRACHLOROETHANE	0.04 mg/L		0.10 ug/L	630-20-6
1,1,2,2-TETRACHLOROETHANE	0.17 mg/L		0.10 ug/L	79-34-5
1,1-DICHLOROETHANE	2.44 mg/L		0.10 ug/L	75-34-3
1,1-DICHLOROPROPENE	0.01 mg/L		0.10 ug/L	563-58-6
1,2,3-TRICHLOROBENZENE	0.07 mg/L		0.10 ug/L	87-61-6
1,2,3-TRICHLOROPROPANE	0.00 mg/L		0.10 ug/L	96-18-4
1,2,4-TRIMETHYLBENZENE	1.22 mg/L		0.10 ug/L	95-63-6
1,3,5-TRIMETHYLBENZENE	1.22 mg/L		0.10 ug/L	108-67-8
1,3-DICHLOROBENZENE	0.73 mg/L		0.10 ug/L	541-73-1
1,3-DICHLOROPROPANE	0.01 mg/L		0.10 ug/L	142-28-9
2,2-DICHLOROPROPANE			0.10 ug/L	594-20-7
S-BUTYLBENZENE	0.98 mg/L		0.10 ug/L	135-98-8
T-BUTYLBENZENE	0.98 mg/L		0.10 ug/L	98-06-6
TRANS-1,3-DICHLOROPROPENE	0.01 mg/L		0.10 ug/L	10061-02-6
TRICHLOROFLUOROMETHANE	7.33 mg/L		0.10 ug/L	75-69-4
DIBROMOMETHANE	0.12 mg/L		0.10 ug/L	74-95-3
DICHLORODIFLUOROMETHANE	4.89 mg/L		0.10 ug/L	75-71-8
HEXACHLOROBUTADIENE	0.00 ug/L		0.10 ug/L	87-68-3
ISOPROPYLBENZENE	2.44 mg/L		0.10 ug/L	98-82-8

M + P XYLENE		0.10 ug/L	106-42-3
NAPHTHALENE	0.49 mg/L	0.10 ug/L	91-20-3
N-BUTYLBENZENE	0.98 mg/L	0.10 ug/L	104-51-8
N-PROPYLBENZENE	0.98 mg/L	0.10 ug/L	103-65-1

VOC REGULATED

Contaminant Name	Drinking Water Standard	PWS Rule	TCEQ Threshold	CAS Number
CHLOROBENZENE (MONOCHLOROBENZENE)	0.10 mg/L		0.10 ug/L	108-90-7
CIS-1,2-DICHLOROETHYLENE	0.07 mg/L	\$290.103(3)(B)	0.10 ug/L	156-59-2
CARBON TETRACHLORIDE	0.00 mg/L	\$290.103(3)(B)	0.10 ug/L	56-23-5
1,1,1-TRICHLOROETHANE	0.20 mg/L	\$290.103(3)(B)	0.10 ug/L	71-55-6
1,1,2-TRICHLOROETHANE	0.01 mg/L	\$290.103(3)(B)	0.10 ug/L	79-00-5
1,1-DICHLOROETHYLENE	0.01 mg/L	\$290.103(3)(B)	0.10 ug/L	75-35-4
1,2,4-TRICHLOROBENZENE	0.07 mg/L	\$290.103(3)(B)	0.10 ug/L	120-82-1
1,2-DICHLOROETHANE	0.01 mg/L	\$290.103(3)(B)	0.10 ug/L	107-06-2
1,2-DICHLOROPROPANE	0.01 mg/L	\$290.103(3)(B)	0.10 ug/L	78-87-5
BENZENE	0.01 mg/L	\$290.103(3)(B)	0.10 ug/L	71-43-2
P-XYLENE		\$290.103(3)(B)	0.10 ug/L	106-42-3
STYRENE	0.10 mg/L	\$290.103(3)(B)	0.10 ug/L	100-42-5
TETRACHLOROETHYLENE	0.01 mg/L	\$290.103(3)(B)	0.10 ug/L	127-18-4
TOLUENE	1.00 mg/L	\$290.103(3)(B)	0.10 ug/L	108-88-3
TRANS-1,2-DICHLOROETHYLENE	0.10 mg/L	\$290.103(3)(B)	0.10 ug/L	156-60-5
TRICHLOROETHYLENE	0.01 mg/L	\$290.103(3)(B)	0.10 ug/L	79-01-6
VINYL CHLORIDE	0.00 mg/L	\$290.103(3)(B)	0.10 ug/L	75-01-4
XYLENES (TOTAL)	10.00 mg/L	\$290.103(3)(B)	0.10 ug/L	none
DICHLOROMETHANE	0.01 mg/L	\$290.103(3)(B)	0.10 ug/L	75-09-2
ETHYLBENZENE	0.70 mg/L	\$290.103(3)(B)	0.10 ug/L	100-41-4
MONOCHLOROBENZENE (CHLOROBENZENE)		\$290.103(3)(B)	0.10 ug/L	108-90-7
M-XYLENE	10.00 mg/L		0.10 mg/L	108-38-3
ORTHO-1,2-DICHLOROBENZENE	0.60 mg/L	\$290.103(3)(B)	0.10 ug/L	95-50-1
O-XYLENE		\$290.103(3)(B)	0.10 mg/L	95-47-6
PARA-1,4-DICHLOROBENZENE	0.08 mg/L	\$290.103(3)(B)	0.10 ug/L	106-46-7

Other

Contaminant Name	Drinking Water Standard	PWS Rule	TCEQ Threshold	CAS Number
CRYPTOSPORIDIUM PARVUM				
AROCLOR (PCB)			0.05 ug/L	53469-21-9
TOTAL ALPHA EMITTING RADIUM	5.00 mg/L	\$290.110		
TOTAL COLIFORM				
TOTAL TRIHALOMETHANE	0.10 mg/L	\$290.116	0.10 ug/L	
TRIAZINES				
ESCHERICHIA COLI				
FECAL VIRUSES				
GIARDIA LAMBLIA				
P-ALKALINITY				

Map Legend

Water System Sources

Source Type

Source Type

 Surface Water

 Ground Water

Capture Zones

Travel Time

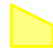
 2 Years

 5 Years

 10 Years

 20 Years

 50 Years

 100 Years

 Other

Truncated Watersheds



Potential Sources of Contamination

Type Description

 ANIMAL FEEDING OPERATION

 BUSINESS

 CEMETERY

 CHEMICAL PIPELINE

 CHEMICAL STORAGE

 CLASS I INJECTION WELL

 CLASS II INJECTION WELL

 CLASS III INJECTION WELL

 CLASS IV INJECTION WELL

 CLASS V INJECTION WELL

 GUN RANGE

 NATURAL RESOURCE PRODUCTION

API



 TRANSPORTATION

 WASTE

 WASTEWATER
